



Controlled Install 1.0

Table of content

Introduction.....	2
Risks and limitations	2
Client	2
Reporting.....	3
Blacklist.....	3
Parameters	4
Known issues.....	6

Document Version	1.0
Contact	contact@sysmanrec.com Please provide a feedback in case that you find any issue or have suggestions for improvements.

Document Revision History

Version	Date	Description of Change
1.0	June 19, 2018	Initial version

THE SOFTWARE IS PROVIDED "AS IS", WITHOUT WARRANTY OF ANY KIND, EXPRESSED OR IMPLIED, INCLUDING BUT NOT LIMITED TO THE WARRANTIES OF MERCHANTABILITY, FITNESS FOR A PARTICULAR PURPOSE AND NONINFRINGEMENT. IN NO EVENT SHALL THE AUTHORS OR COPYRIGHT HOLDERS BE LIABLE FOR ANY CLAIM, DAMAGES OR OTHER LIABILITY, WHETHER IN AN ACTION OF CONTRACT, TORT OR OTHERWISE, ARISING FROM, OUT OF OR IN CONNECTION WITH THE SOFTWARE OR THE USE OR OTHER DEALINGS IN THE SOFTWARE.

Introduction

Controlled Install is a utility that was provided to allow users to install software with administrative rights without being local administrators. It should run in the context of the system account and must therefore be started by SCCM or similar deployment software.

Risks and limitations

Controlled Install was provided to avoid the risks that arise from giving users full admin permissions. As a consequence, several actions will not work or will be limited:

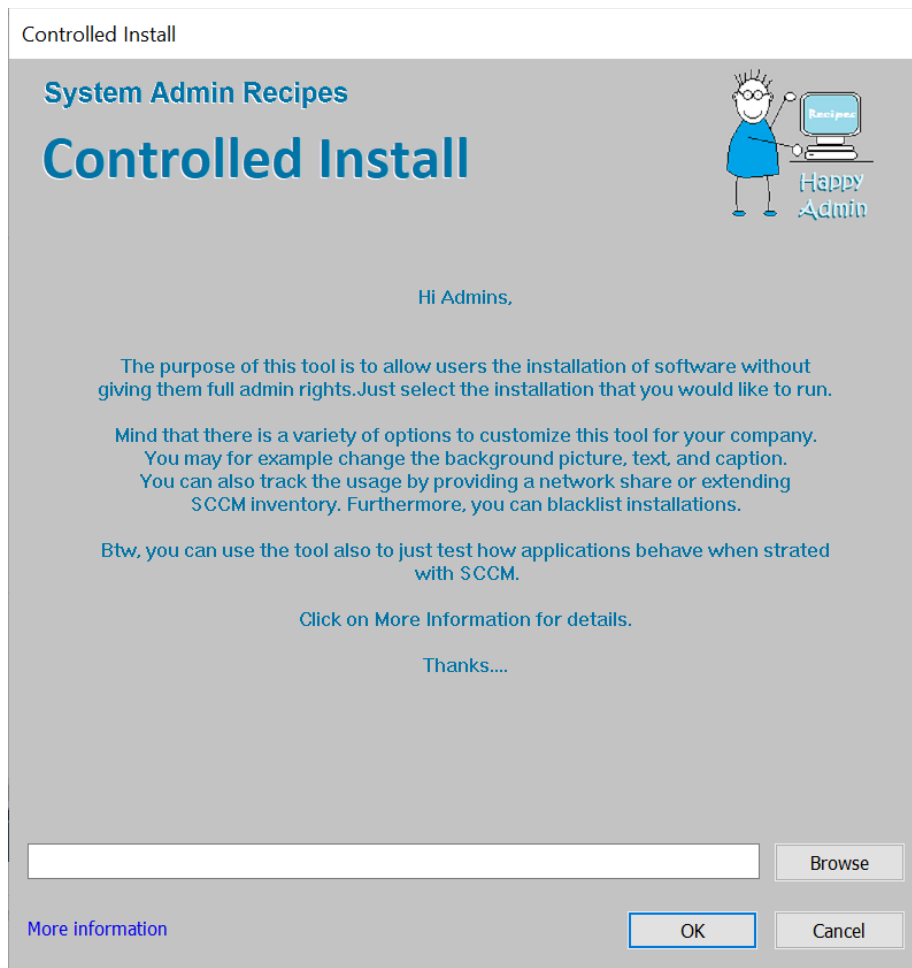
- Opening a *command prompt* or *mmc.exe* (Microsoft Management Console) is not possible. Therefore, the user has no administrative access to management tools on the workstation.
- Accessing the internet requires the user to start *C:\Program Files\Internet Explorer\iexplore.exe* and to authenticate in case of connections over the proxy. In case the user wants to install software from the internet, he should download it first and call *Controlled Install* to launch the installation from the local hard disk.
- Installations that require access the internet (e.g. to check license information) may fail.
- Plug and Play installation will not work in case that admin rights are required.

Additional restrictions can be made by adding programs to the blacklist (see Appendix).

Client

The client software provides the option to select an exe or msi file that will be launched in an administrative context (provided the tool itself runs in this context). Note that the user must start it from *Software Center* and that it doesn't create any shortcuts in the *Programs* menu or on the desktop.

After selecting the file and pressing *Finish*, the installation will start. The tool will close when it's finished.



Afterwards, the utility launches the installation, copies the log file to the specified server location (see Appendix) and closes itself with return code 0 without waiting for the installation to complete.

Reporting

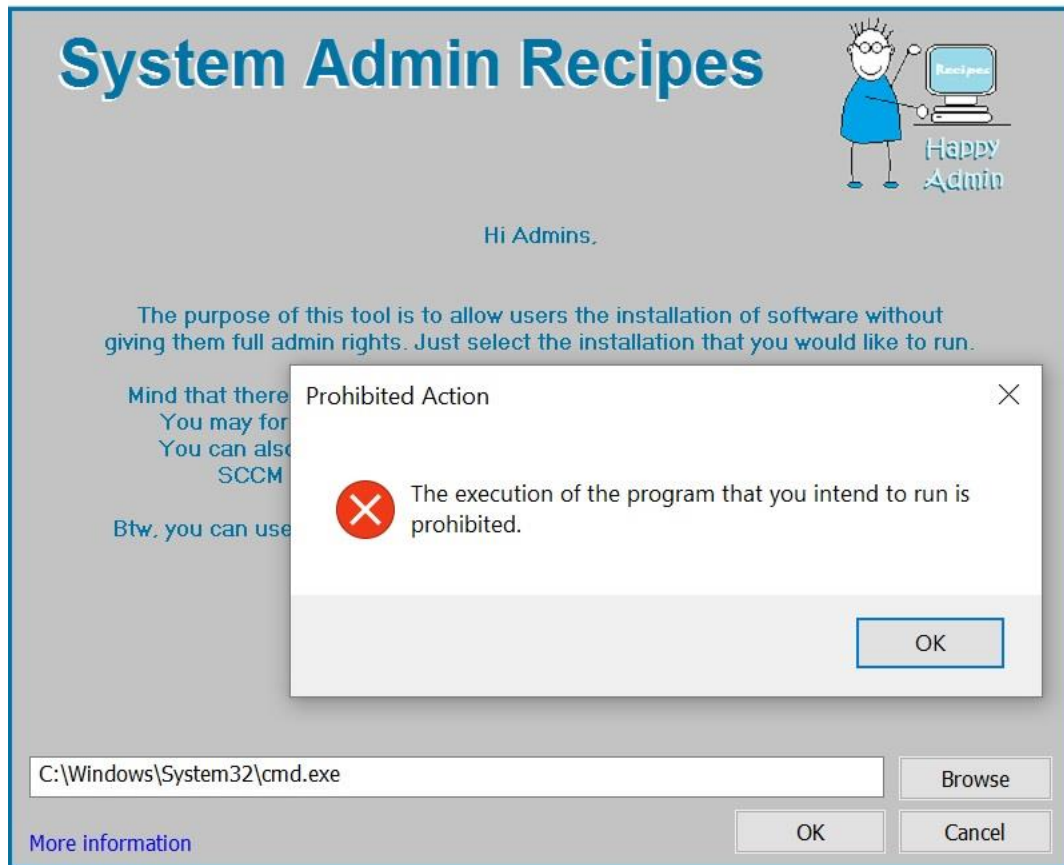
When the user has launched an application, a report will be created and copied to a server location (see also *Parameters* in the appendix).

Blacklist

The blacklist defines programs that the users shall not run. Blacklist entries can be executables or msi files (like *explore.exe* or *VerInf.msi*) or search strings (example: *firefox*). In case of search strings, the following file entries will be checked:

- *CompanyName*
- *FileDescription*
- *FileVersion*
- *InternalName*
- *LegalCopyright*
- *OriginalFilename*
- *ProductName*
- *ProductVersion*

In case of any matches, the user will get the following message:



The Blacklist section in the ini file contains the following entries:

```
[BlackList]
Exec1=cmd.exe
Exec2=mmc.exe
Exec3=taskmgr.exe
Search4=CompanyXYZ
```

Mind that gaps in the numbering are allowed but you must not use numbers twice (e.g. Exec12 and Search12).

Parameters

Future versions may include a configuration wizard for the tool. For the time being, parameters have to be set in the ControlledInstall.ini directly. Mind that this ini has to be located in the same folder as the ControlledInstall.exe. Additionally, the folder should contain the background image that you intend to use. It will be stretched to 800x648 pixel and must be called *background.bmp*.

The following parameters determine the appearance and functionality of the program:

HyperLink

If you would like to provide additional information to the user, you can provide a link that will appear in the lower left corner. If you leave the entry blank, it will not appear.

Example:

```
Hyperlink=www.sysmanrec.com
```

StaticColor

Example StaticColor=195,195,195

Background color of the hyperlink control. The RGB value that should match the color of your background picture.

MainText

The text that gets displayed. You have to take care for line breaks, use \CR to start a new line.

Example:

MainText=Select the installation that you would like to run.\CRIt will be started with admin rights.\CR\CRPlease note that it is in your responsibility to check the\CRlicense terms of the software that you intend to install.You are\CRspecifically reminded that in continuing with the setup and bringing external\CRsoftware into the company, you are certifying that the software is necessary for\CRyour role and that it addresses a business requirement.\CR\CRThe installation of software for private purposes is not allowed.\CR\CRPlease note also that in order to protect the integrity of the company's IT infrastructure,\CRall installations of software with this tool will be monitored and checked for\CRcompliance. You may be asked for the business justification.

The text size will adapt automatically to the dpi value of the screen.

TextColor

Color of the main text.

Example:

TextColor=0,116,166

LogFilePath

Local log file path. Check ControlledInstall.log in this path for any issues. The default path is c:\windows\temp\ControlledInstall.log.

Example:

LocalLogPath=c:\windows\temp

ServerLogFilePath

In case you want to check what was installed you have to set a server share that is accessible for authenticated users.

Example:

ServerLogFilePath=\\server1\ControlledInstallReports\$

The tool writes an entry in csv format with the following information:

Time, MachineName, InstallPath, ProductName, ProductVersion, FileDescription, FileVersion, OrigFileName, CompanyName

EnableRegistryLogging

If set to 1, the same information that is being written to the server will be logged to the registry. You may extend SCCM inventory to grab this information.

The location is

HKEY_LOCAL_MACHINE\SOFTWARE\WOW6432Node\ControlledInstall on 64bit machines and
HKEY_LOCAL_MACHINE\SOFTWARE\ControlledInstall on 32bit machines.

Android SDK Tools	ControlledInstall07-18-18.11-42-59	REG_SZ	07\18\18 11:43:15,MAXL001,C:\Users\maxwita\Downloads\Wireshark-win64-2.4.1...
BriceLambson	ControlledInstall07-18-18.12-00-40	REG_SZ	07\18\18 12:01:05,MAXL001,C:\Users\maxwita\Downloads\Wireshark-win64-2.4.1...
Buhl Data Service GmbH	ControlledInstall07-18-18.23-43-25	REG_SZ	07\18\18 23:44:57,MAXL001,msiexec /i C:\Users\maxwita\Downloads\WindowsAd...
CentricDevelopment	ControlledInstall07-18-18.23-45-20	REG_SZ	07\18\18 23:46:31,MAXL001,msiexec /i C:\Users\maxwita\Downloads\WindowsAd...
Classes			
Clients			
ControlledInstall			

Example:

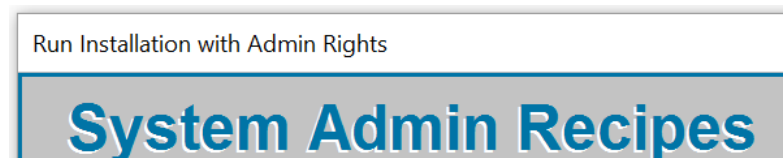
EnableRegistryLogging=1

WindowsCaption

Custom Windows caption. The default is *Controlled Install*.

Example:

WindowsCaption=Run Installation with Admin Rights



MaxBlackListSize

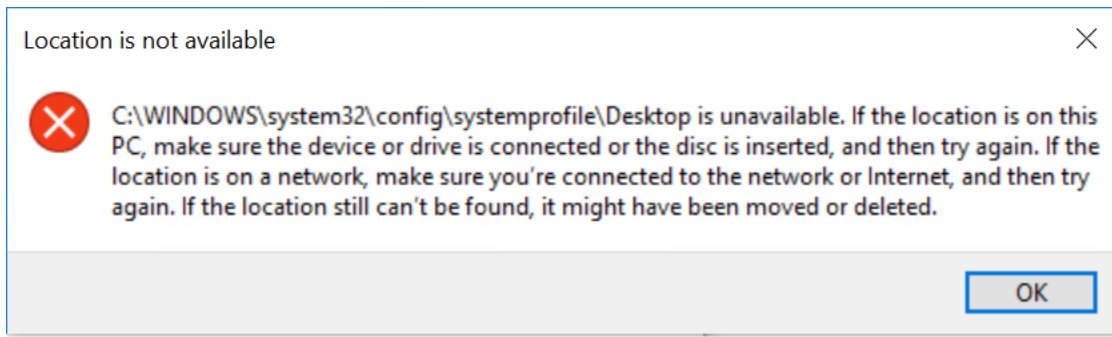
Number of Blacklist entries. By default, the number is limited to 1000.

Example:

MaxBlackListSize=2000

Known issues

- The error message *Location is not available* pops up when running the tool in system context. This is because the system profile has no desktop. The message can be ignored.



- In case a setup is hanging, Controlled Install will become unresponsive, too.